



Condo for sale  
175 Metcalfe, Westmount

## Description

Sample post

### Key Features

Bright, spacious living spaces  
varying between 746 and 2365 sq.ft.  
Only 2 townhouses, 7 condos  
and 3 penthouses left!  
2 or 3 bedroom formats



### **Ava Ball**

514 757-4485

McGill immobilier

[Ava@mcgillimmobilier.com](mailto:Ava@mcgillimmobilier.com)

Real estate broker



**[Nicolas Hovsepyan](#)**

514 812-3450

McGill immobilier

[Nick@mcgillimmobilier.com](mailto:Nick@mcgillimmobilier.com)

Residential real estate broker

## **SIMPLY WESTMOUNT**

Designed to evoke a timeless beauty, the Simply Westmount condo project features classic lines, blending seamlessly into the surrounding traditional English architecture that has made Westmount a place of distinction. A wide variety of condos are offered in 2 or 3 bedroom formats, including townhouse condominiums with private yard and entry, or spectacular top-floor penthouses with private roof patios.

## **THE BUILDING**

### **TIMELESS ARCHITECTURE**

The 175 Metcalfe's stately red brick façade and classic lines faithfully reflect the distinguished architectural style that has made Westmount a place of distinction.

## **INTERIOR**

### **A PLACE OF ONE'S OWN, WHERE LUXURY REIGNS SUPREME**

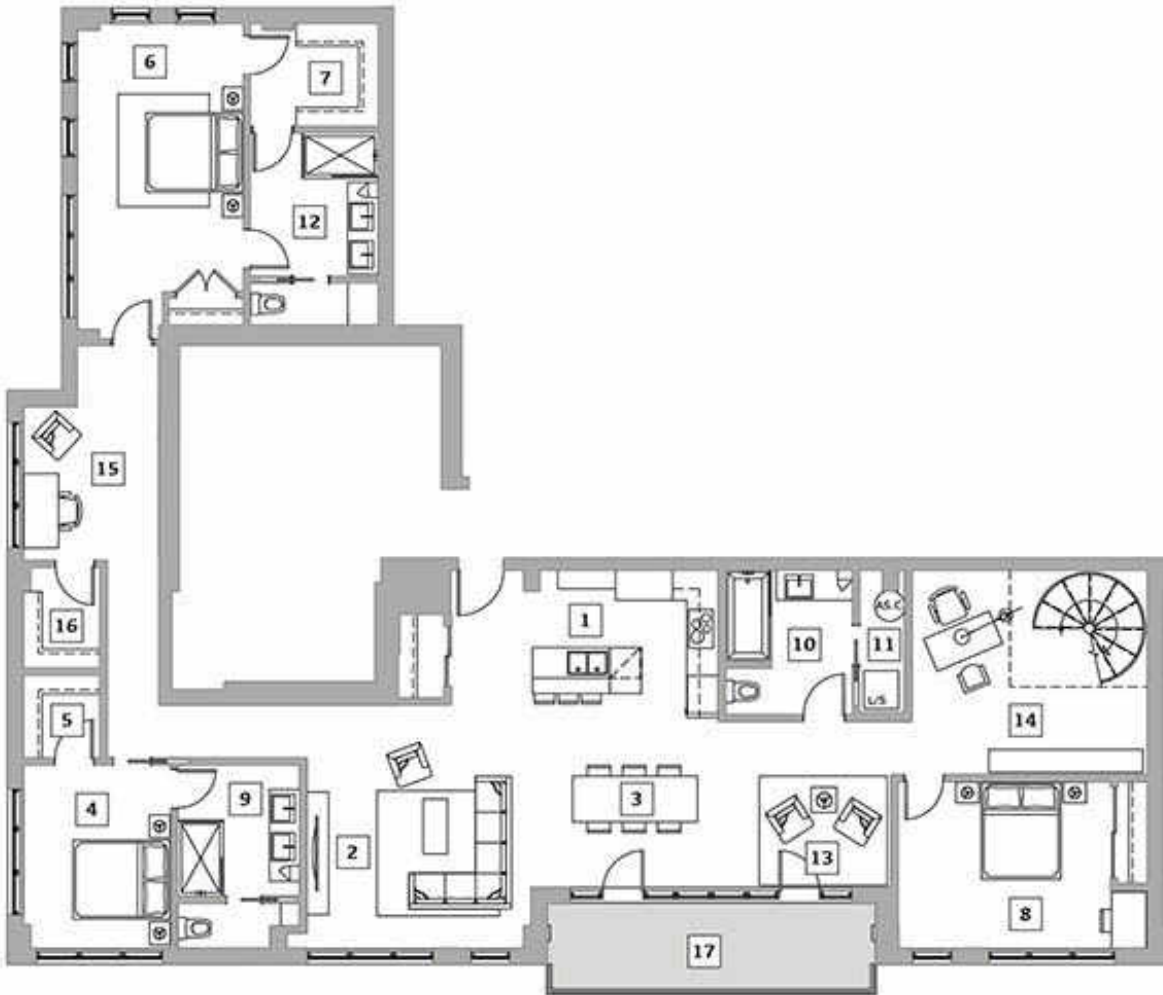
175 Metcalfe's elegant style is the stuff of dreams. Living spaces varying between 746 to 2365 sq.ft are bright, spacious and designed and appointed according to the strictest standards of the market.



[205 – 2nd floor, 770 sq. ft.](#)



[402 – 4th floor – 1 475 sq. ft.](#)



[601 – 6th floor, 2 365 sq. ft.](#)

### DELIVERY DATE

November 2015

### FINISHES & AMENITIES

- 10 foot ceilings
- Central A/C
- Central Heating system
- Central vacuum system
- Smart home technology (electronic door lock control, light control...)
- Alarm system
- Floor to ceiling windows
- Exterior space (balcony / terrace / yard) for all apartments
- High end finishes
- Door man
- Common roof top terrace and more...



Our townhouses come with private entrance, vestibule, front and back yard.  
Our penthouses come with a beautiful private roof top Terrace and magnificent iron staircase with Atrium.

### PROXIMITY

Very close to all amenities, the MUHC hospital, Westmount Recreation Centre, Westmount Park, Westmount Square, Atwater Market, Alexis Nihon complex, Atwater metro , all schools — nursery, primary, secondary, CEGEP and university. Everything is within 10 minutes of you! Ideal location — close but set back!

### OPENING HOURS

#### SALES OFFICE

Our representatives are eager to help you discover the 175 Metcalfe. Come by for a visit!

Monday 11:00 – 18:00

Tuesday 11:00 – 18:00

Wednesday 11:00 – 18:00

Thursday 11:00 – 18:00

Friday CLOSED

Saturday 12:00 – 17:00

Sunday 12:00 – 17:00



### Category

1. Condominium for Sale
2. Featured Real Estate
3. Real Estate

### Tags

1. Ana Ball
2. McGill Real Estate
3. Nicolas Hovsepyan

### Date Created

January 2015